

Optimizing Laryngeal Cleft Outcomes



Douglas von Allmen, MD

*Pediatric Otolaryngology
Aerodigestive and Esophageal Center
Cincinnati Children's Hospital Medical
Center
Cincinnati, Ohio*



Aerodigestive Society meeting

Nashville, TN

September 10th 2025



Surgical Interventions – Posterior Grafting

- S/p TEF/EA post birth
- S/p LEC repair x 2
- Required a posterior graft to repair the TEF and the stenosis



Follow up Airway evaluation

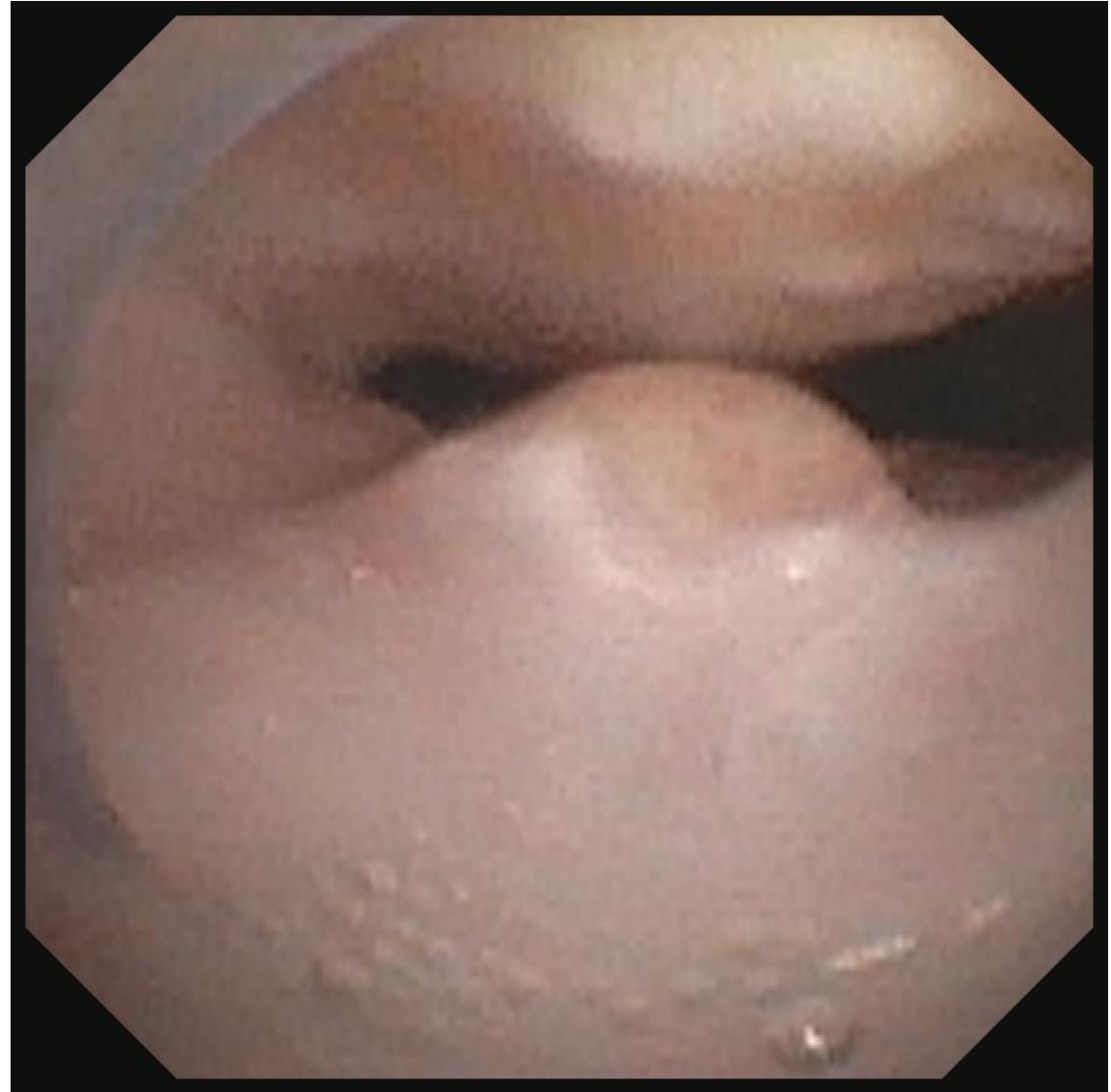
Create Submucosal pockets
for the graft
Suture into place



Tracheomalacia

Tracheostomy

- Granulation tissue
 - Tx: Steroids, Cryo



Basic Science Update for Cleft

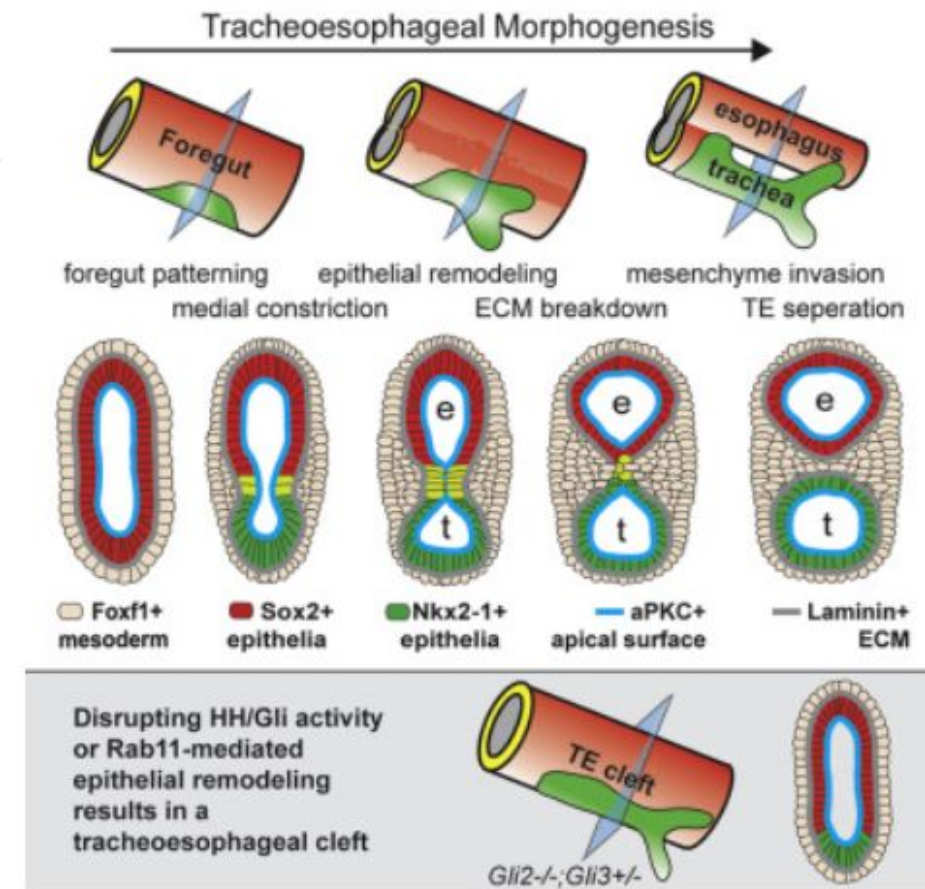
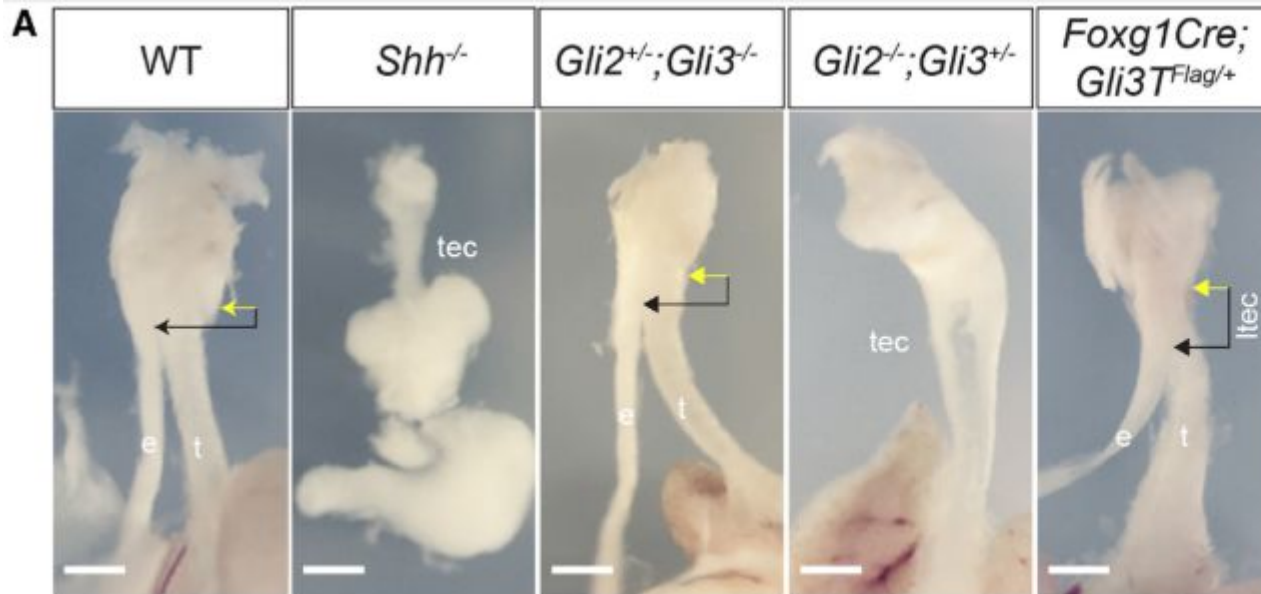


Researching the cause of trachea-esophageal birth defects

The **CLEAR Consortium** is a collaborative research program dedicated to discovering the genetic causes of trachea-esophageal birth defects, such as [esophageal atresia](#) and [tracheoesophageal fistula \(EA/TEF\)](#). Funded by the Eunice Kennedy Shriver National Institute of Child Health and Human Development, our goal is to better understand the origin of these conditions, enhance diagnosis and improve treatment.

Endosome-Mediated Epithelial Remodeling Downstream of Hedgehog-Gli Is Required for Tracheoesophageal Separation

Talia Nasr^{1,2,4} · Pamela Mancini^{1,4,5} · Scott A. Rankin¹ · Nicole A. Edwards¹ · Zachary N. Agricola³ · Alan P. Kenny³ · Jessica L. Kinney¹ · Keziah Daniels¹ · Jon Vardanyan¹ · Lu Han^{1,6} · Stephen L. Trisno^{1,2} · Sang-Wook Cha^{1,7} · James M. Wells^{1,2} · Matthew J. Kofron^{1,2} · Aaron M. Zorn^{1,2,8} [✉](#) [Show less](#)



Food for thought



- Role for tissue bank?
 - Tissue for Genetics/Histologic assessment
- Tissue engineering